



Department of Public Works
City Engineering Division

Robert F. Phillips, P.E.
City Engineer

City-County Building, Room 115
210 Martin Luther King, Jr. Boulevard
Madison, Wisconsin 53703
FAX 608 264 9275
www.cityofmadison.com

608 266 4751

Assistant City Engineer
Michael R. Dailey, P.E.
Principal Engineers
Christina M. Bachmann, P.E.
John S. Fahrney, P.E.
Gregory T. Fries, P.E.
Christopher J. Petykowski, P.E.
Facilities & Sustainability
Jeanne E. Hoffman, Manager
James C. Whitney, A.I.A.
Operations Supervisor
Kathleen M. Cryan
GIS Manager
David A. Davis, R.L.S.
Financial Officer
Steven B. Danner-Rivers
Hydrogeologist
Brynn Bemis

**NOTICE OF ADDENDUM
ADDENDUM NO. 1**

CONTRACT NO. 7042

**UTILITY REPLACEMENT WITH RESURFACING – 2013
(WALTER ST & JOHNS ST)**

Revise and amend the contract document(s) for the above project as stated in this addendum, otherwise, the original document shall remain in effect.

PLANS:

DELETE

Delete pages U-2, U-5, U-6 & U-8 & W1-W4

INSERT

Insert page U-2, U-5, U-6, U-8 & W1-W4 (revised 4/24/13)

SPECIAL PROVISIONS:

DELETE

Delete pages D-12

INSERT

Insert pages D-12 (revised 4/24/13)

Summary of Addendum 1:


- Revised storm sewer pipe end (S-6)
- Revised minimum casing size to 30" with a minimum thickness of 0.50" to bid item 90070.
- Added sanitary sewer main pipe material requirement of SDR-26 to bid item 90070.
- Updated water plans reflecting storm change.

Please acknowledge this addendum on page E1 of the contract documents.

Electronic version of these documents can be found on the City of Madison web site at:

<http://www.cityofmadison.com/business/PW/contracts/openforBid.cfm>

If you are unable to download plan revisions associated with the addendum, please contact the Engineering office at 608-266-4751 receive the material by another route.



Robert F. Phillips, City Engineer

WN8	Abandon the valve box.
WN9	Furnish the ditch, compaction and all materials and labor for the installation of new service lateral.
WN10	Remove and salvage existing hydrant.
WN11	Replace the existing copper service with a new copper service.

BID ITEM 90070 – BORE & JACK 18” DIAMETER SANITARY SEWER

DESCRIPTION

Work under this item shall include the installation and material cost to BORE AND JACK 18” Diameter Sewer sanitary sewer main with casings. The sanitary sewer shall be installed by boring and jacking where included with this bid item is a suitable sized “casing pipe”. The casing pipe must be sized by the contractor in order for the inner sanitary sewer lateral to properly fit within the casing pipe. All costs for furnishing and installing the steel casing pipe, casing spacers, access and receiving pits, and all work necessary to push the casing pipe shall be included.

Included in this item is the excavation and backfilling of the receiving pits. Disposal of the excess material shall be by the Contractor off site at a location to be determined by the Contractor. Backfilled material shall meet City of Madison Standard Specifications for road construction- 2013 Edition. Necessary work and materials to adequately secure the pits with full cover or security fencing shall be incidental to this bid item. **Also incidental to this bid item shall be the removal and replacement of items required to install the new sewer and casing: concrete sidewalk, concrete cunette, existing 21” sanitary being crossed or other similar features. The City will be installing a cured in place liner in the 21” Vitrified Clay sewer being crossed with the project in advance of the project. The 18” diameter sewer being installed with the casing will be included as incidental to this bid item.**

The Contractor is informed that the casing pipe specified shall be at a minimum of 30” diameter or as large as deemed necessary by the contractor to successfully complete the work in accordance with the construction plans.

Sanitary sewer main inside casing shall be ASTM D3034 SDR-26 pipe.

B. Materials

Bore and Jack shall include all materials necessary to install the 18” sanitary sewer pipe in accord with the requirements above. A casing pipe included with this item shall be in accord with the following:

- ASTM specification A139 Grade B or AWWA specification C200
- Outside diameter as specified by the Contractor
- Not coated or cathodically protected, no hydrostatic testing required
- 0.50” minimum thickness (See chart on Sheet U-5 for casing thickness requirements)
- Specified minimum yield strength, SMYS, of at least 35,000 psi
- New and unused pipe
- Straight and round pipe
- Beveled ends for butt welding

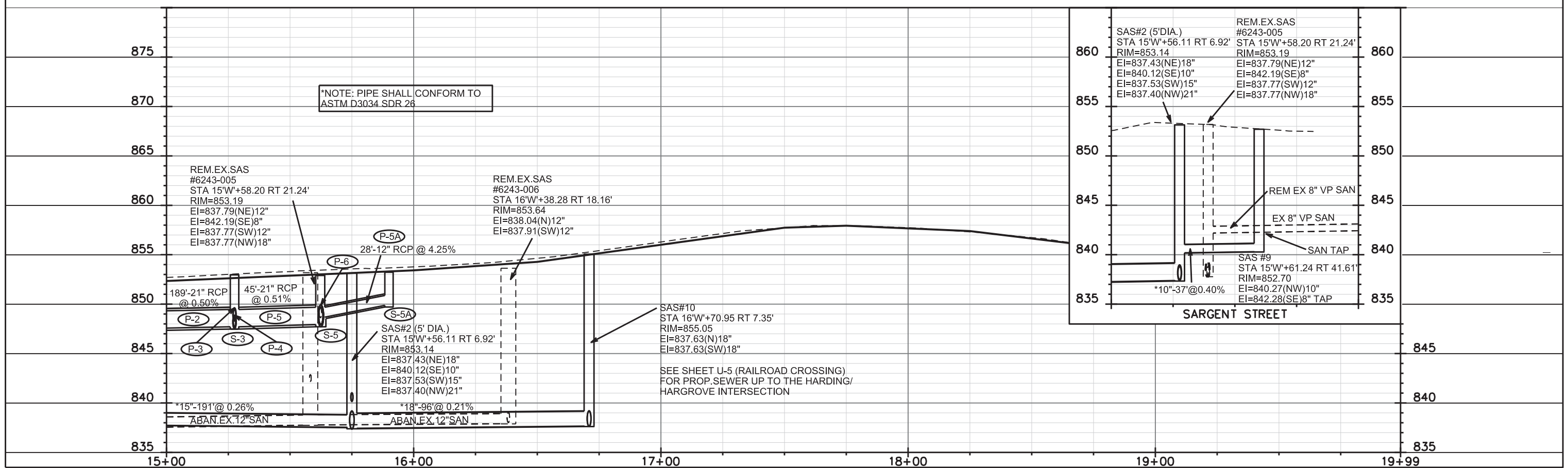
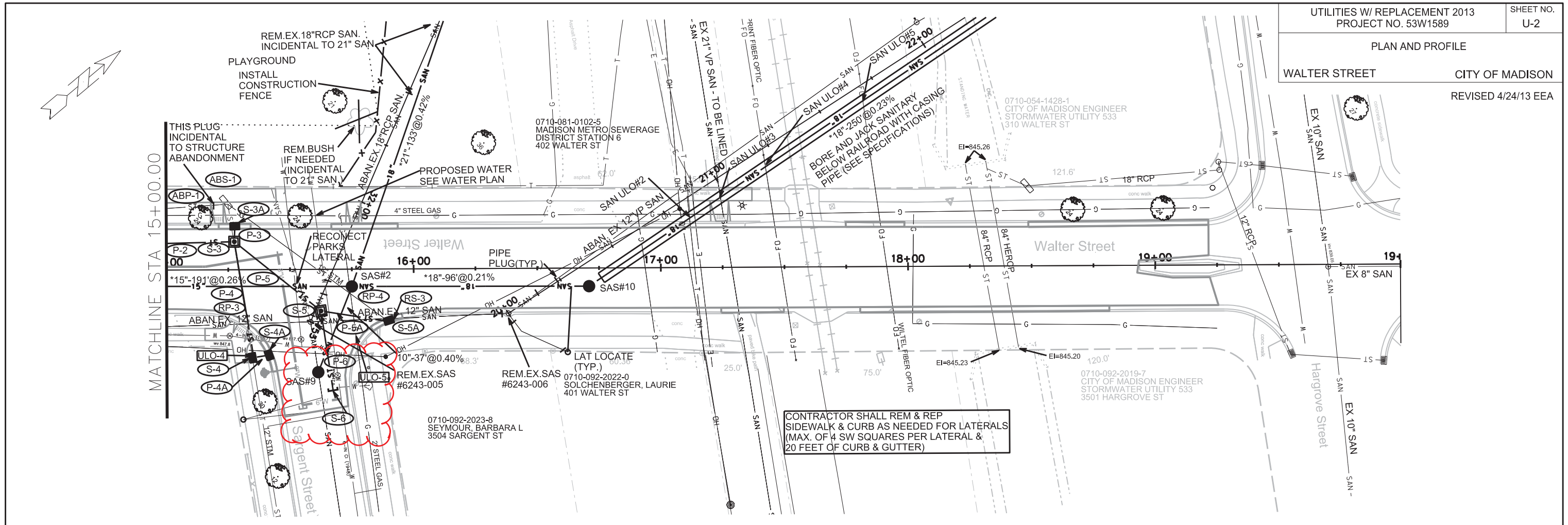
The Contractor shall submit the following to the Engineer for approval prior to ordering of materials and the start of construction:

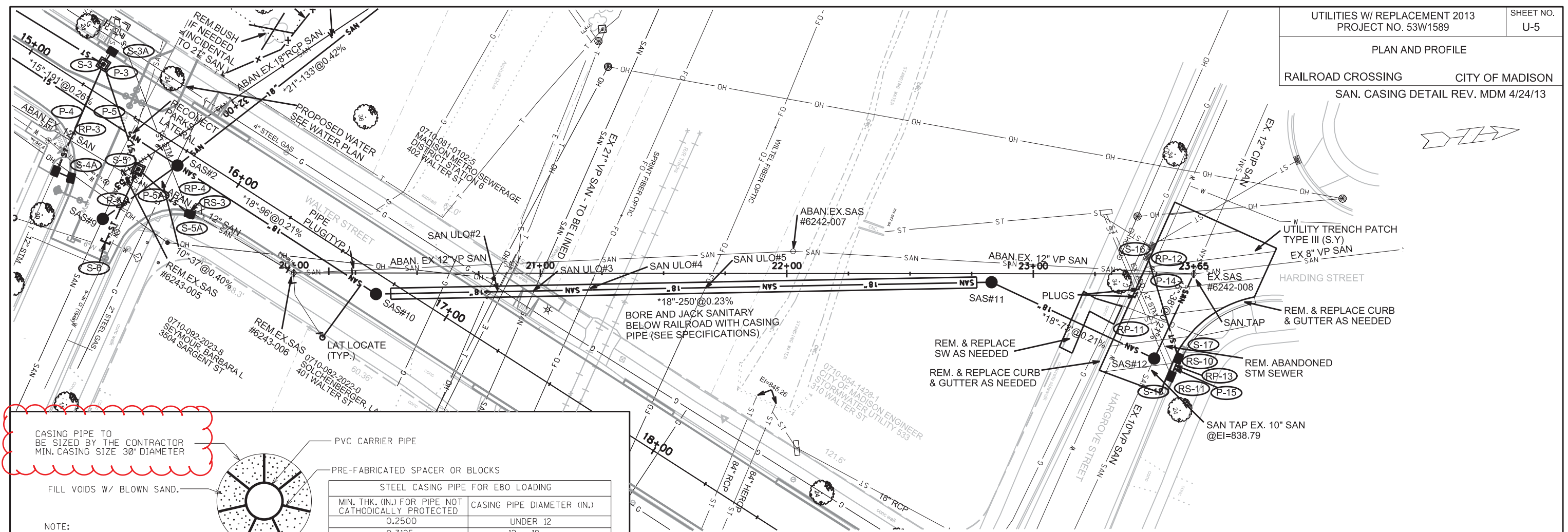
- Certificate of compliance for the steel casing pipe
- Materials for sand or pea gravel
- Materials for casing spacers and distances between spacers
- Materials and methods for bulkheading the casing ends

CONSTRUCTION METHODS

PLAN AND PROFILE

WALTER STREET CITY OF MADISON
REVISED 4/24/13 EEA





CASING PIPE TO BE SIZED BY THE CONTRACTOR MIN. CASING SIZE 30" DIAMETER

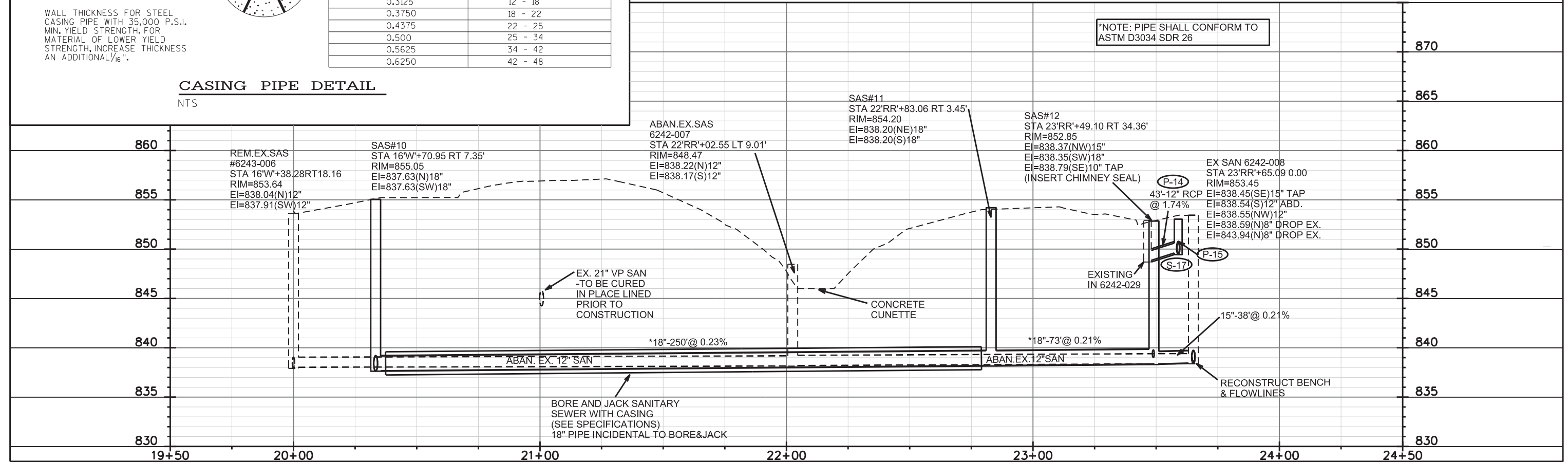
FILL VOIDS W/ BLOWN SAND.

NOTE:
WALL THICKNESS FOR STEEL CASING PIPE WITH 35,000 P.S.I. MIN. YIELD STRENGTH. FOR MATERIAL OF LOWER YIELD STRENGTH, INCREASE THICKNESS AN ADDITIONAL 1/16".

PVC CARRIER PIPE
PRE-FABRICATED SPACER OR BLOCKS

STEEL CASING PIPE FOR E80 LOADING	
MIN. THK. (IN.) FOR PIPE NOT CATHODICALLY PROTECTED	CASING PIPE DIAMETER (IN.)
0.2500	UNDER 12
0.3125	12 - 18
0.3750	18 - 22
0.4375	22 - 25
0.5000	25 - 34
0.5625	34 - 42
0.6250	42 - 48

CASING PIPE DETAIL
NTS



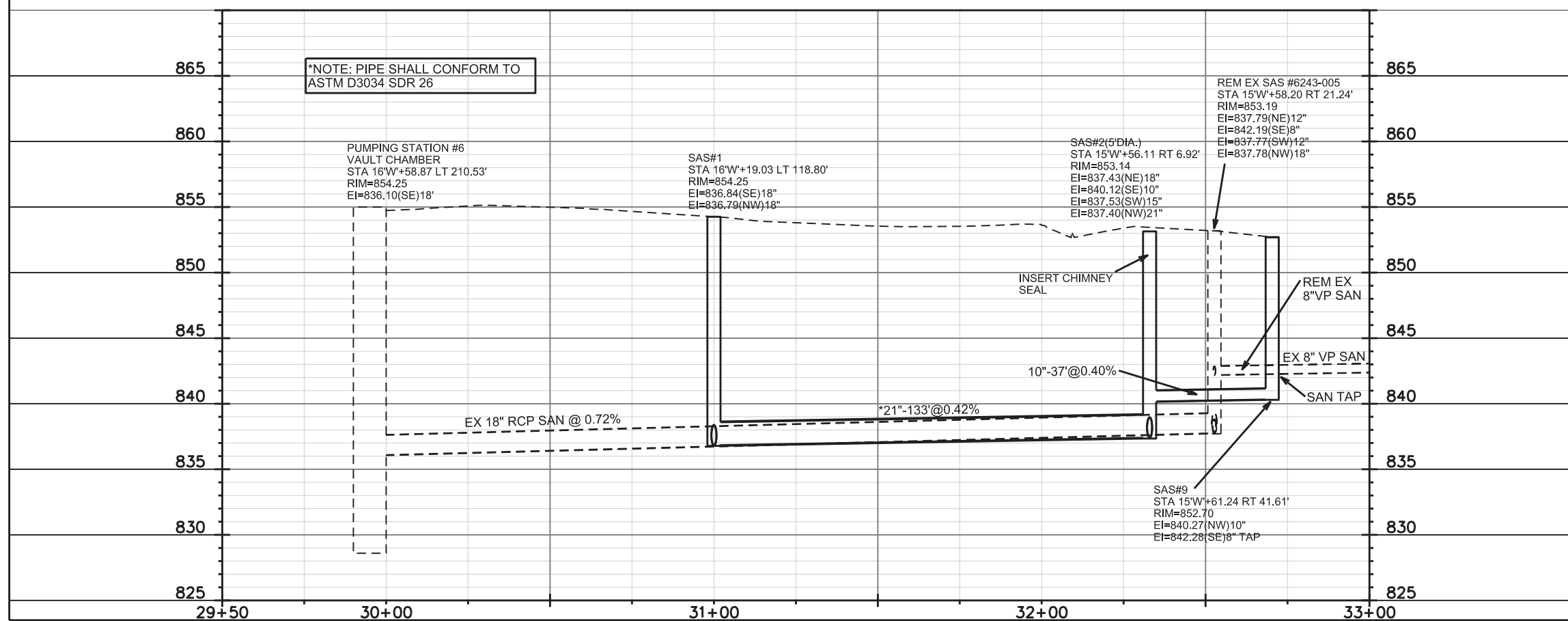
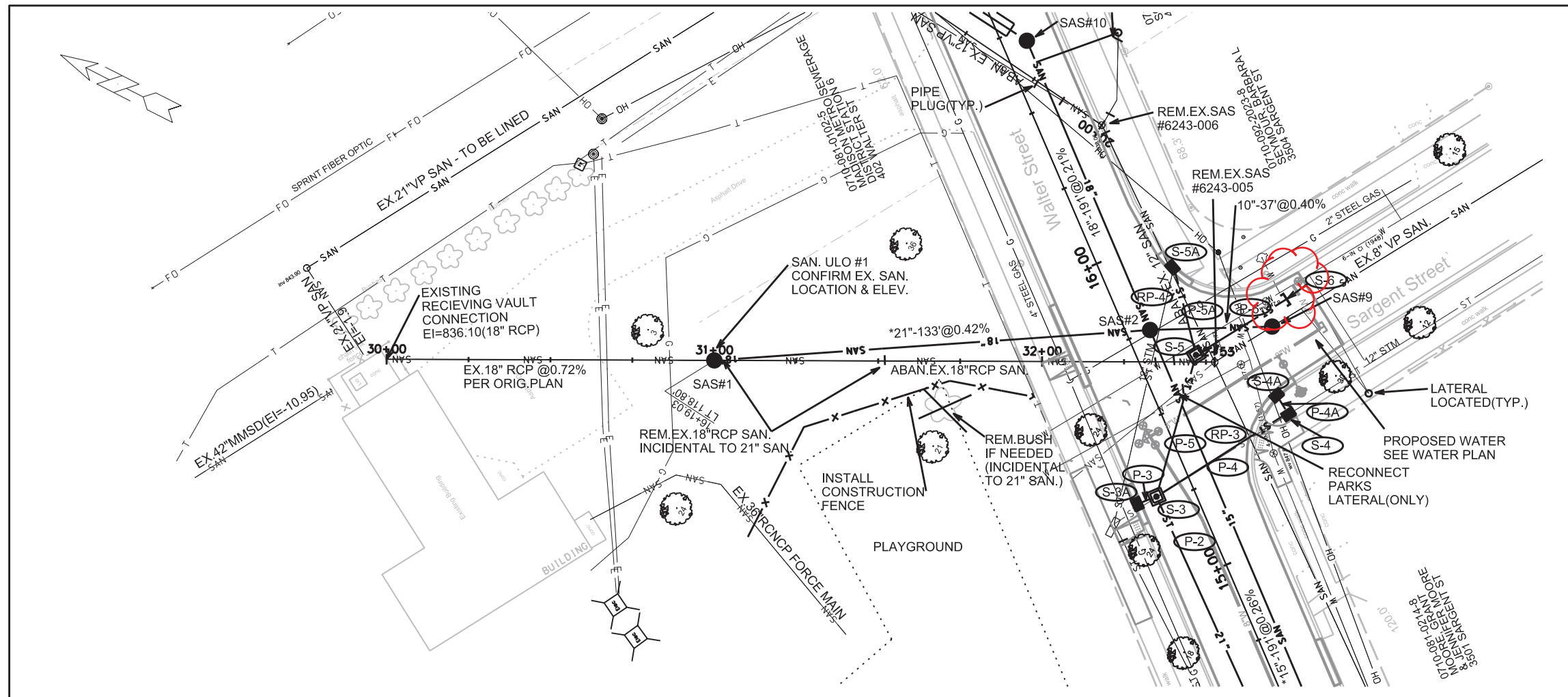
*NOTE: PIPE SHALL CONFORM TO ASTM D3034 SDR 26

PLAN AND PROFILE

PUMP STATION

CITY OF MADISON

REVISED 4/24/13 EEA



*NOTE: PIPE SHALL CONFORM TO
ASTM D3034 SDR 26

REM EX SAS #6243-005
STA 15°W+58.20 RT 21.24'
RIM=853.19
EI=837.79(NE)12"
EI=842.19(SE)8"
EI=837.77(SW)12"
EI=837.78(NW)18"

INSERT CHIMNEY SEAL

REM EX 8" VP SAN

EX 8" VP SAN

SAN TAP

PLOT SCALE: _____

PLOT NAME: _____

REV. DATE: _____

ORIGINATOR: CITY OF MADISON, STREETS DIVISION

STORM SEWER SCHEDULE

ALIGNMENT CODES:

'JS' =JOHN STREET
'WS' =WALTER STREET

* REVISED 4/24/13 EEA

UTILITIES W/ REPLACEMENT 2013	SHEET NO.
PROJECT NO. 53W1589	U-8
JOHNS STREET	
STORM SEWER SCHEDULE	CITY OF MADISON

STRUCTURES

STRUC. NO.	STATION	LOCATION (OFFSET)	TYPE	TOP OF CASTING	E.I.	DEPTH	NOTES
S-0	12'WS'+28.00	LT-27.39	STM TAP	-	845.35	-	TAP EX AS 6243-002
S-1	12'WS'+27.72	LT-10.00	3X3 SAS	849.77	845.44	4.33	FP; W/ R-1550-0054; (1); (2)
S-1A	50'JS'+27.75	RT-21.65	STM TAP	-	846.30	-	TAP EX AS 6243-029
S-1B	50'JS'+27.65	RT-27.12	H INLET	849.90	846.37	3.53	W/ R-3067-7004-V
S-1C	50'JS'+19.00	LT-32.60	H INLET	849.82	846.57	3.25	W/ R-3067-7004-V
S-2	13'WS'+39.12	LT-10.84	3X3 SAS	850.95	846.77	4.18	W/ R-1550-0054
S-3	15'WS'+27.61	LT-11.41	3X3 SAS	852.97	847.71	5.26	W/ R-1550-0054
S-3A	15'WS'+28.00	LT-18.30	H INLET	852.73	848.93	3.80	W/ R-3067-7004-V
S-4	15'WS'+34.66	RT-35.43	H INLET	852.80	848.30	4.50	W/ R-1878-B7L; (1)
S-4A	15'WS'+40.61	RT-35.18	H INLET	852.44	847.98	4.46	W/ R-3067-7004-V
S-5	15'WS'+62.52	RT-16.93	3X3 SAS	853.35	847.94	5.41	W/ R-1550-0054
S-5A	15'WS'+90.00	RT-21.30	H INLET	853.23	849.88	3.35	W/ R-3067-7004-V
* S-6	15'WS'+68.47	RT-55.43	PIPE PLUG	-	848.11	-	-
S-7	52'JS'+38.00	RT-22.00	STM TAP	-	846.44	-	TAP EX AS 6243-030
S-7A	52'JS'+37.70	RT-15.50	H INLET	850.07	846.57	3.50	W/ R-3067-7004-V
S-7B	53'JS'+35.00	LT-15.50	STM TAP	-	846.91	-	TAP EX IN 6243-033
S-8	53'JS'+80.00	RT-21.40	STM TAP	-	846.71	-	TAP EX AS 6243-037
S-8A	53'JS'+80.62	RT-15.50	H INLET	850.26	846.75	3.51	W/ R-3067-7004-V
S-8B	53'JS'+81.00	LT-15.50	H INLET	849.92	846.90	3.02	W/ R-3067-7004-V
S-9	55'JS'+32.50	RT-22.00	STM TAP	-	847.24	-	TAP EX AS 6243-018
S-9A	55'JS'+34.47	RT-15.50	H INLET	850.06	847.28	2.78	FP; W/ R-3067-7004-V
S-9B	55'JS'+42.00	LT-15.50	H INLET	849.89	847.44	2.45	FP; W/ R-3067-7004-V
S-10	56'JS'+91.52	RT-9.45	STM TAP	-	847.74	-	TAP EX AS 6243-009
S-10A	56'JS'+73.00	LT-20.00	STM TAP	-	847.91	-	TAP EX IN 6243-011
S-11	57'JS'+04.00	RT-21.50	STM TAP	-	847.82	-	TAP EX AS 6243-008
S-11A	57'JS'+24.00	LT-28.00	STM TAP	-	848.08	-	TAP EX IN 6243-012
S-12	56'JS'+51.60	RT-21.00	CONCRETE COLLAR	-	847.24	-	(1)
S-13	56'JS'+60.60	RT-21.00	3X3 SAS	850.53	847.24	3.29	FP; W/ R-1550-0054
S-14	56'JS'+87.50	RT-21.00	STM TAP	-	847.24	-	TAP EX AS 6243-010
S-15	56'JS'+53.00	RT-36.00	H INLET	850.48	847.32	3.16	W/ R-3067-7004-V
S-16	23'RR'+47.21	LT-6.00	STM TAP	-	848.86	-	TAP EX IN 6242-029
S-17	23'RR'+59.60	RT-34.40	H INLET	853.04	849.61	3.43	W/ R-3067-7004-V
S-18	23'RR'+56.80	RT-41.94	H INLET	853.16	849.88	3.28	W/ R-3067-7004-V

PIPES

PIPE NO.	FROM (DNSTM)	TO (UPSTM)	LGTH (FT)	DISCH. E.I.	INLET E.I.	SLOPE (%)	PIPE SIZE	TYPE	NOTES
P-0	S-0	S-1	18	845.35	845.44	0.50%	30"	RCP	-
P-1	S-1	S-2	112	846.19	846.77	0.52%	21"	RCP	-
P-1A	S-1A	S-1B	5	846.30	846.37	1.40%	12"	RCP	NCM
P-1B	S-1A	S-1C	54	846.30	846.57	0.50%	12"	RCP	NCM
P-2	S-2	S-3	189	846.77	847.71	0.50%	21"	RCP	-
P-3	S-3	S-3A	6	848.46	848.93	7.83%	12"	RCP	-
P-4	S-3	S-4	47	847.71	847.95	0.51%	12"	RCP	NCM
P-4A	S-4	S-4A	6	847.95	848.30	5.83%	12"	RCP	-
P-5	S-3	S-5	45	847.71	847.94	0.51%	21"	RCP	-
P-5A	S-5	S-5A	28	848.69	849.88	4.25%	12"	RCP	-
* P-6	S-5	S-6	33	847.94	848.11	0.52%	21"	RCP	-
P-7	S-7	S-7A	7	846.44	846.57	1.86%	12"	RCP	NCM
P-7A	S-7A	S-7B	29	846.57	846.91	1.17%	12"	RCP	-
P-8	S-8	S-8A	7	846.71	846.75	0.57%	12"	RCP	NCM
P-8A	S-8A	S-8B	30	846.75	846.90	0.50%	12"	RCP	-
P-9	S-9	S-9A	7	847.24	847.28	0.57%	12"	RCP	NCM
P-9A	S-9A	S-9B	32	847.28	847.44	0.50%	12"	RCP	-
P-10	S-10	S-10A	33	847.74	847.91	0.52%	12"	RCP	-
P-11	S-11	S-11A	52	847.82	848.08	0.50%	12"	RCP	-
P-12	S-12	S-13	9	847.24	847.24	0.00%	24"	RCP	-
P-12A	S-13	S-14	27	847.24	847.24	0.00%	24"	RCP	-
P-13	S-13	S-15	16	847.24	847.32	0.50%	12"	RCP	-
P-14	S-16	S-17	43	848.86	849.61	1.74%	12"	RCP	-
P-15	S-17	S-18	8	849.61	849.88	3.37%	12"	RCP	-

SPECIFIC NOTES

- (1) ULO TO BE COMPLETED PRIOR TO ANY STORM SEWER WORK
- (2) RECONNECT EX 24" STM PIPE (SOUTH EAST)

ULO SCHEDULE

ID NO.	STATION	LOCATION (OFFSET)	TYPE	NOTES
ULO-1	12'WS'+27.72	LT-10.00	STORM	CONFIRM ELEVATION ON STORM SEWER
ULO-2	12'WS'+64.71	LT-8.60	GAS	-
ULO-3	50'JS'+20.75	LT-17.50	GAS	-
ULO-4	15'WS'+34.66	RT-35.43	STORM	CONFIRM ELEVATION ON STORM SEWER
ULO-5	15'WS'+76.59	RT-26.88	GAS	-
ULO-6	55'JS'+33.29	RT-18.65	ELEC & TV	-
ULO-7	56'JS'+51.60	RT-21.00	STORM & TV	CONFIRM ELEVATION ON STORM SEWER
ULO-8	56'JS'+68.00	RT-21.00	GAS	-
ULO-9	56'JS'+80.76	LT-7.60	GAS	-
ULO-10	57'JS'+20.00	LT-18.30	GAS	-

STANDARD NOTES:

- ABBREVIATIONS: AE = APRON ENDWALL; RCP = REINFORCED CONCRETE PIPE; HERCP= HORIZONTAL ELLIPTICAL REINFORCED CONCRETE PIPE; DNA = DOES NOT APPLY; SAS = SEWER ACCESS STRUCTURE; LP = LOW POINT INLET STRUCTURE; FP = FIELD POURED STRUCTURE; TR = TOP OF CONCRETE ROOF; NCM = NO CROWN MATCH FOR PIPES
- APPROXIMATE DISCHARGE E.I. GIVEN, ADJUST E.I. AND PIPE SLOPE IN THE FIELD.
- TOP OF CASTING GRADE GIVEN IS THE TOP OF CURB FOR INLET STRUCTURES AND THE FLOWLINE OF THE CLOSED CASTING FOR SAS'S.
- TOP OF CONCRETE ROOF (TR) IS 1.25' BELOW TOP OF CASTING UNLESS OTHERWISE NOTED.
- ALL REINFORCED CONCRETE PIPES TO BE CLASS III UNLESS OTHERWISE NOTED.
- SURVEYOR TO CONFIRM THAT ALL INLET STATION / OFFSETS LINE UP WITH PROPOSED CURB AND GUTTER.
- ALL STRUCTURES CALLED OUT AS FIELD POURED SHALL BE FIELD POURED. ALL OTHER STRUCTURES (NOT INDICATED AS FIELD POURED) SHALL BE SUBMITTED TO CITY ENGINEERING FOR APPROVAL IF PRECAST STRUCTURES ARE PREFERRED. CONTACT ELIA E. ACOSTA OF CITY ENGINEERING AT (608) 266-4096 FOR PRECAST APPROVALS, OR FAX SHOP DRAWINGS TO (608)264-9275.

WATER PLAN AND PROFILE

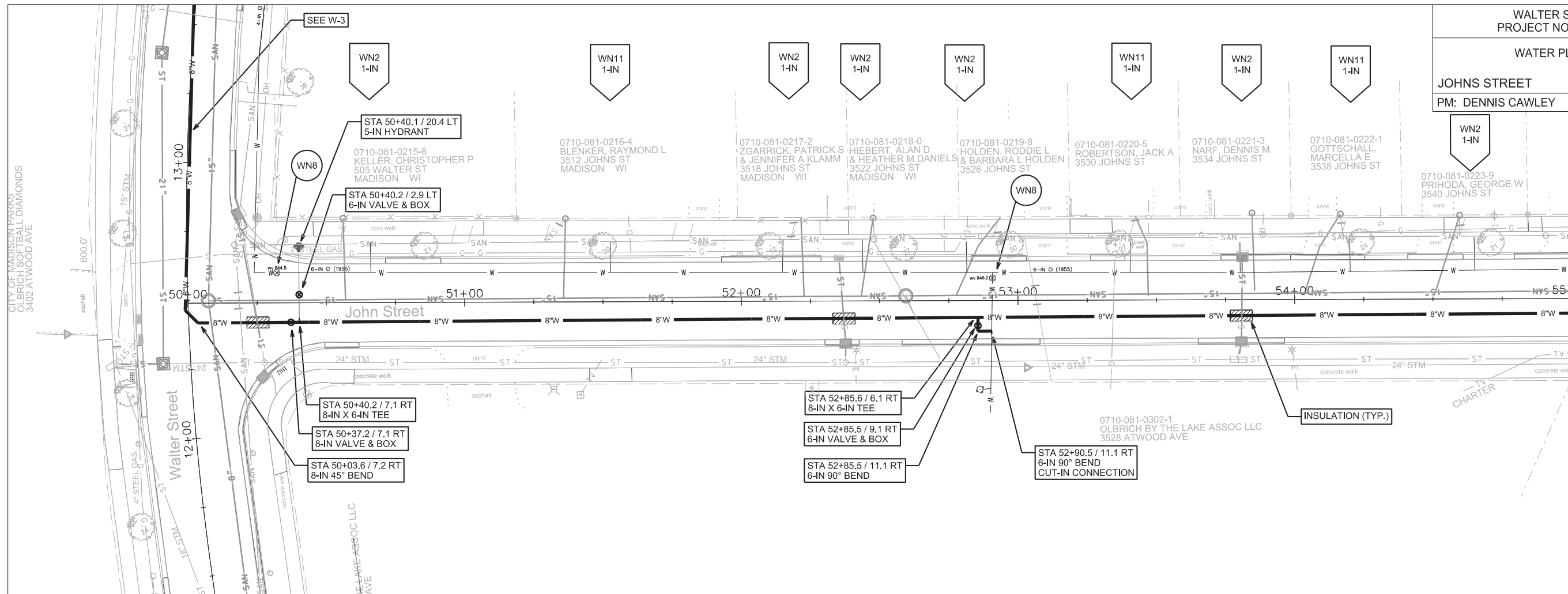
JOHNS STREET

CITY OF MADISON

PM: DENNIS CAWLEY

DESIGNER: PEH

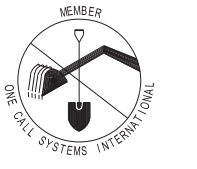
REV1 - 4/24/2013



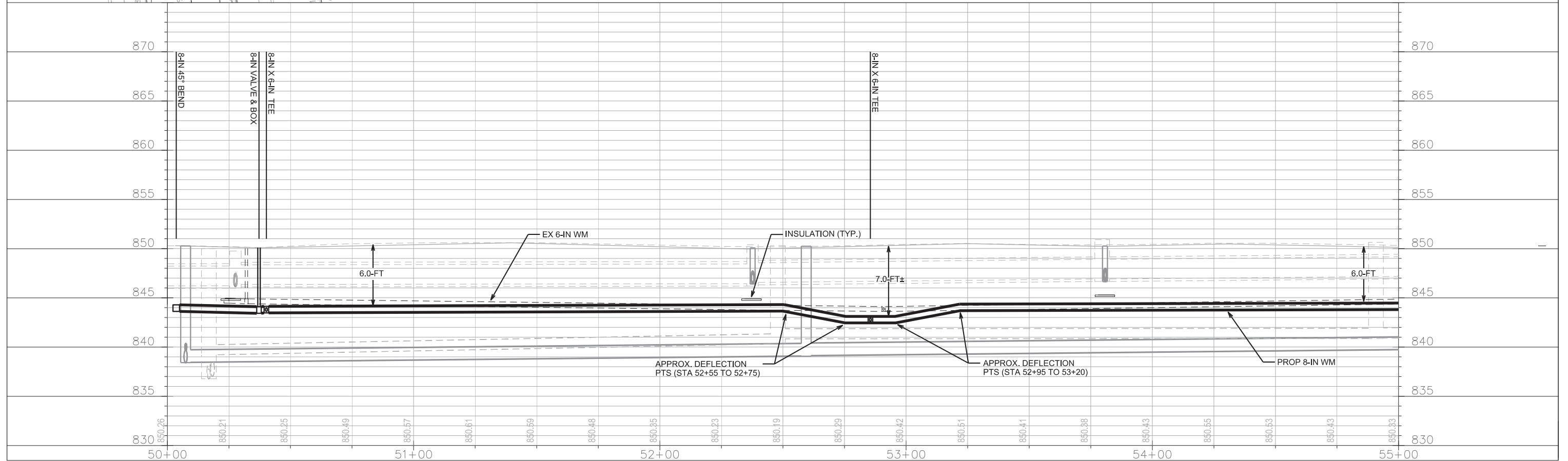
MATCHLINE STA 55+00.00 (W-2)

TO OBTAIN LOCATION OF PARTICIPANTS' UNDERGROUND FACILITIES BEFORE YOU DIG IN WISCONSIN
CALL DIGGERS HOTLINE
TOLL FREE
811 OR 1-800-242-8511
FAX-ALOCATE 1-800-338-3860
TDD (FOR HEARING IMPAIRED) 1-800-542-2289

WIS. STATUTE 182.0175 (1974)
REQUIRES MIN. OF 3 WORK DAYS
NOTICE BEFORE YOU EXCAVATE.



DISCLAIMER NOTE:
UTILITY LOCATIONS SHOWN ARE APPROXIMATE ONLY. IT SHALL BE THE CONTRACTOR'S RESPONSIBILITY TO DETERMINE THE EXACT HORIZONTAL AND VERTICAL LOCATION OF ALL EXISTING UNDERGROUND AND OVERHEAD UTILITIES PRIOR TO COMMENCING WORK.



PLOT SCALE: _____

PLOT NAME: _____

REV. DATE: _____

ORIGINATOR: CITY OF MADISON, STREETS DIVISION

WATER PLAN AND PROFILE

JOHNS STREET

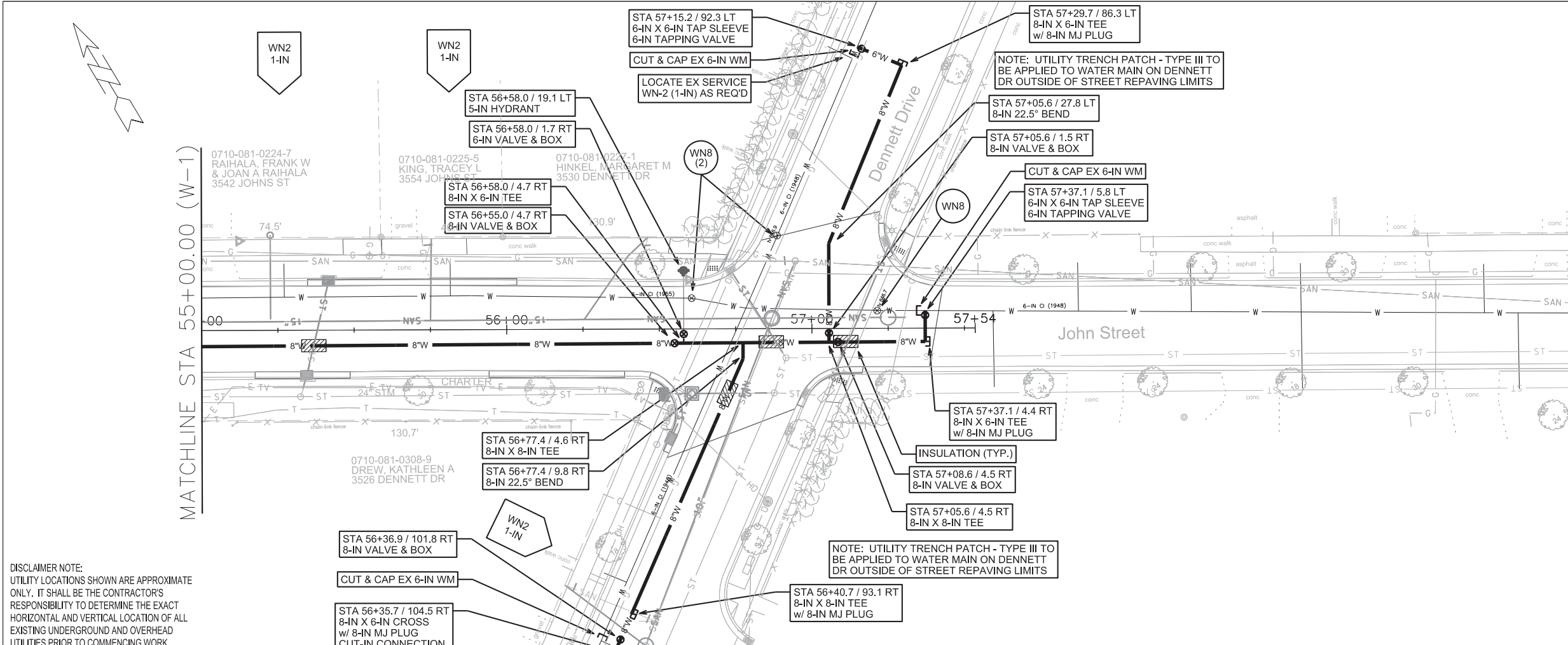
CITY OF MADISON

PM: DENNIS CAWLEY

DESIGNER: PEH

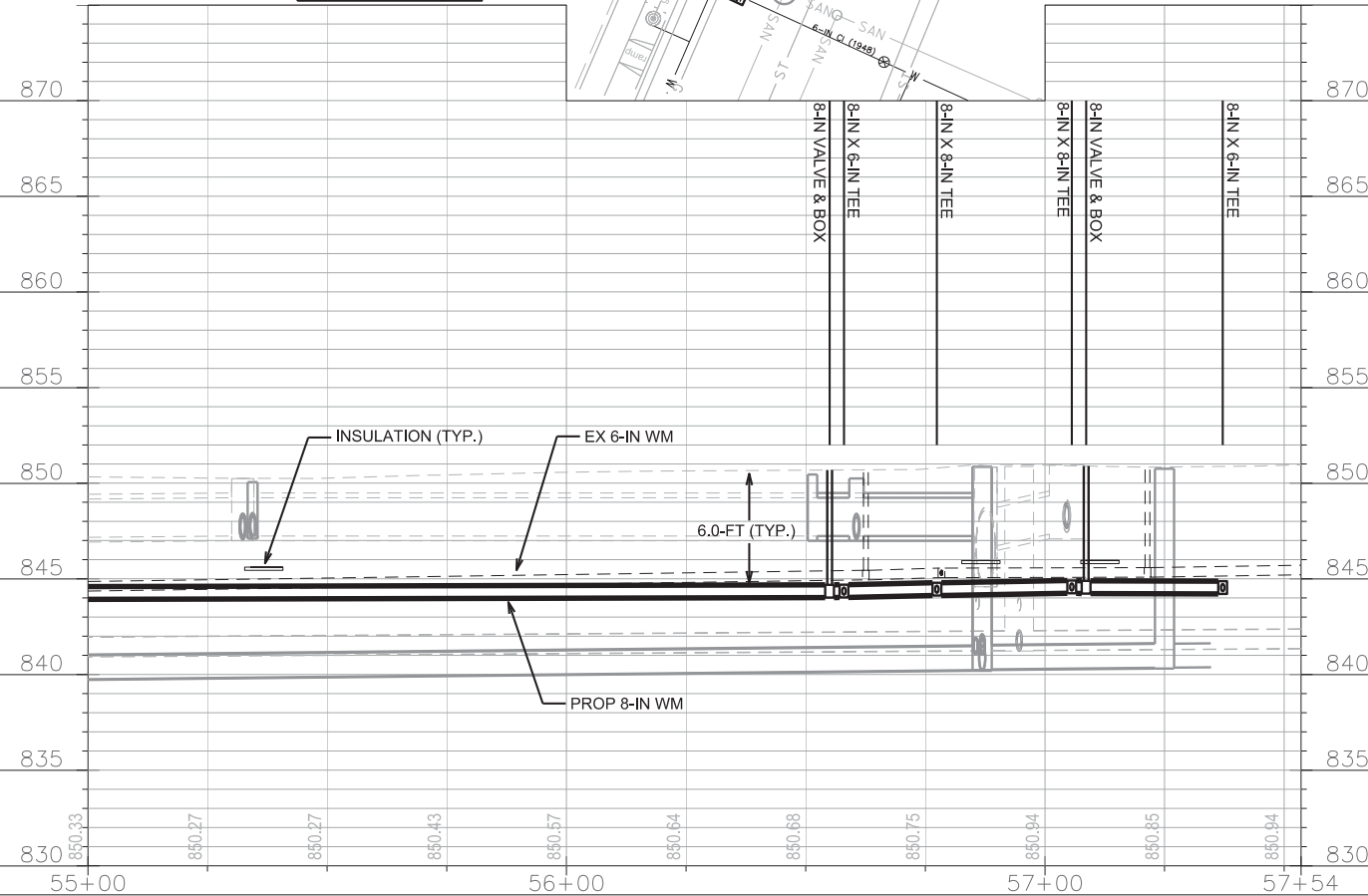
REV1 - 4/24/2013

MATCHLINE STA 55+00.00 (W-1)



DISCLAIMER NOTE:
UTILITY LOCATIONS SHOWN ARE APPROXIMATE ONLY. IT SHALL BE THE CONTRACTOR'S RESPONSIBILITY TO DETERMINE THE EXACT HORIZONTAL AND VERTICAL LOCATION OF ALL EXISTING UNDERGROUND AND OVERHEAD UTILITIES PRIOR TO COMMENCING WORK.

TO OBTAIN LOCATION OF PARTICIPANTS' UNDERGROUND FACILITIES BEFORE YOU DIG IN WISCONSIN
CALL DIGGERS HOTLINE TOLL FREE
811 OR 1-800-242-8511
FAX-A-LOCATE 1-800-338-3860
TDD (FOR HEARING IMPAIRED) 1-800-542-2289
WIS. STATUTE 182.0175 (1974) REQUIRES MIN. OF 3 WORK DAYS NOTICE BEFORE YOU EXCAVATE.

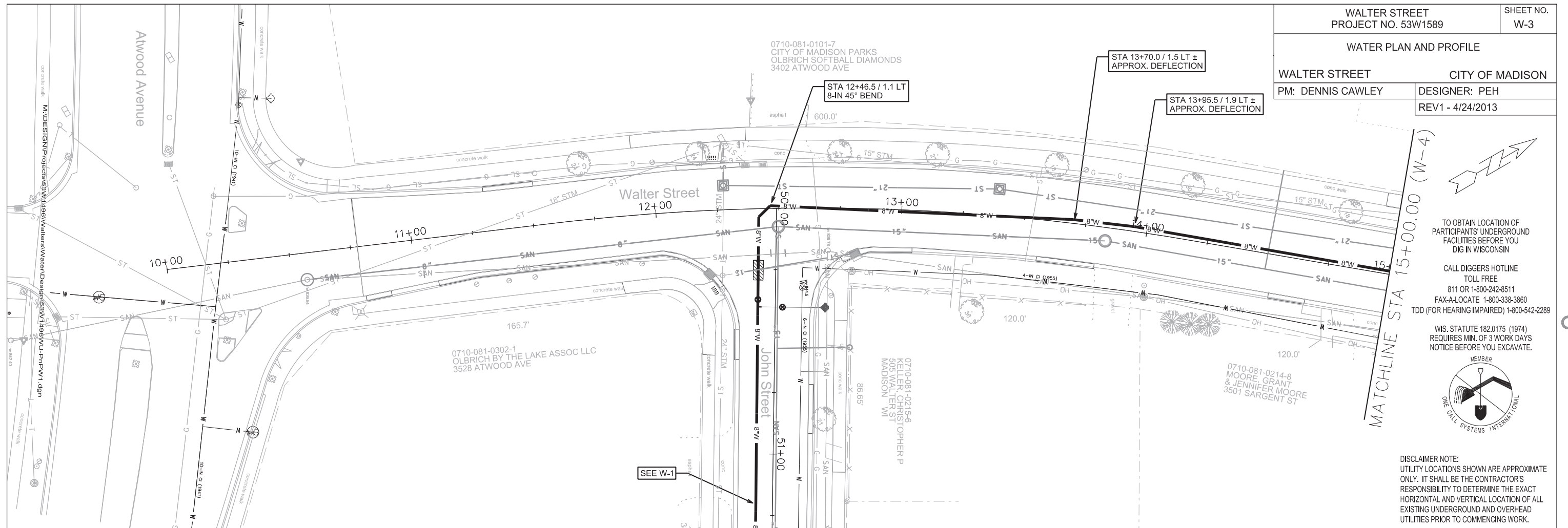


PLOT SCALE: _____
PLOT NAME: _____
REV. DATE: _____
ORIGINATOR: CITY OF MADISON, STREETS DIVISION

WATER PLAN AND PROFILE

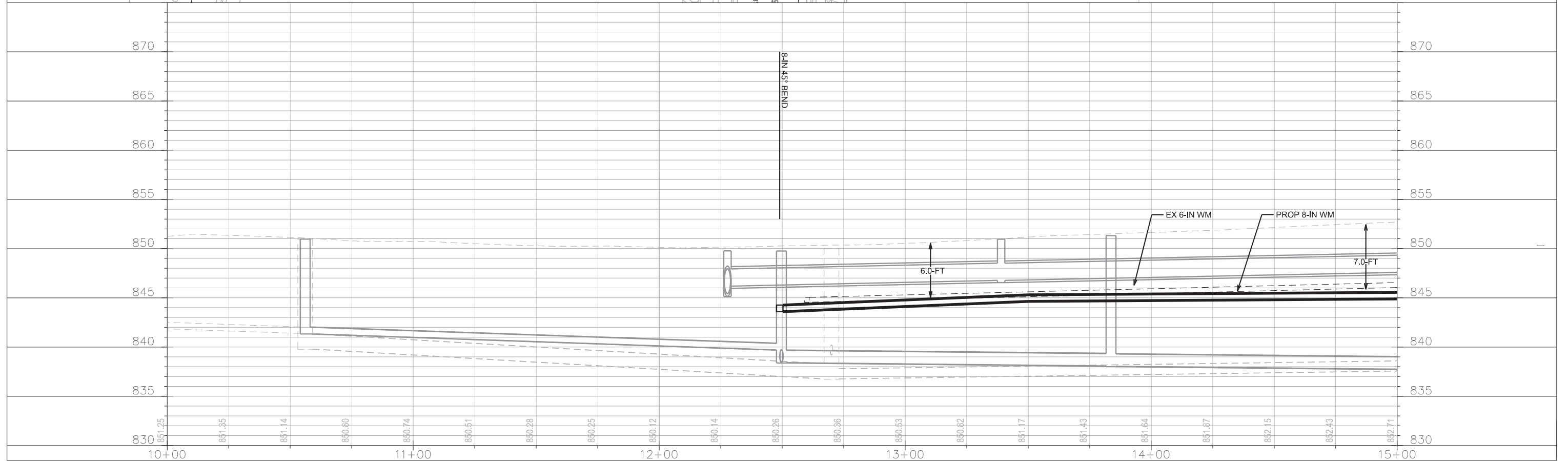
WALTER STREET
PM: DENNIS CAWLEY

CITY OF MADISON
DESIGNER: PEH
REV1 - 4/24/2013



TO OBTAIN LOCATION OF PARTICIPANTS' UNDERGROUND FACILITIES BEFORE YOU DIG IN WISCONSIN
 CALL DIGGERS HOTLINE
 TOLL FREE
 811 OR 1-800-242-8511
 FAX-A-LOCATE 1-800-338-3860
 TDD (FOR HEARING IMPAIRED) 1-800-542-2289
 WIS. STATUTE 182.0175 (1974) REQUIRES MIN. OF 3 WORK DAYS NOTICE BEFORE YOU EXCAVATE.

DISCLAIMER NOTE:
 UTILITY LOCATIONS SHOWN ARE APPROXIMATE ONLY. IT SHALL BE THE CONTRACTOR'S RESPONSIBILITY TO DETERMINE THE EXACT HORIZONTAL AND VERTICAL LOCATION OF ALL EXISTING UNDERGROUND AND OVERHEAD UTILITIES PRIOR TO COMMENCING WORK.



PLOT SCALE: _____
 REV. DATE: _____
 ORIGINATOR: CITY OF MADISON, STREETS DIVISION

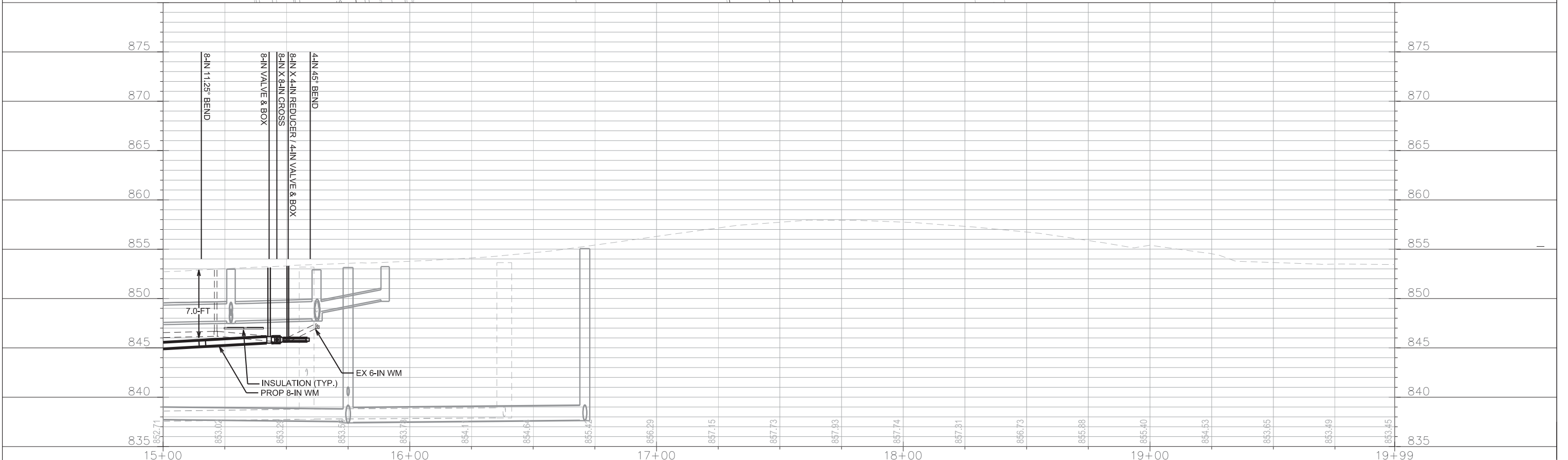
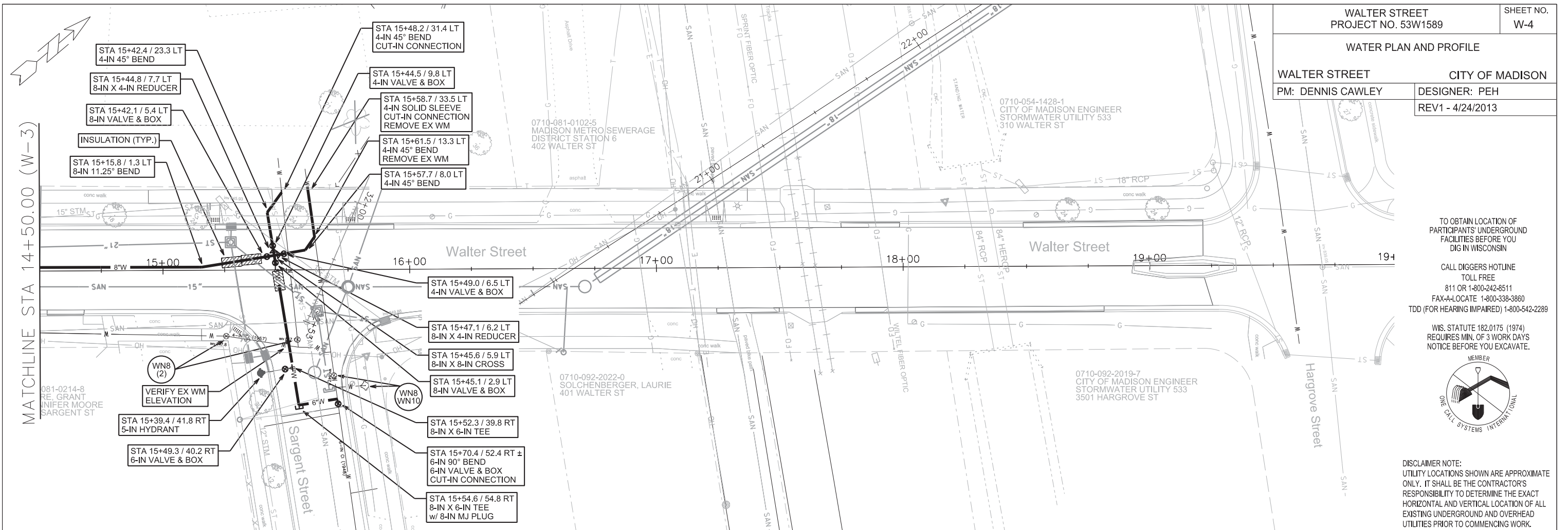
WATER PLAN AND PROFILE

WALTER STREET CITY OF MADISON
PM: DENNIS CAWLEY DESIGNER: PEH
REV1 - 4/24/2013

TO OBTAIN LOCATION OF PARTICIPANTS' UNDERGROUND FACILITIES BEFORE YOU DIG IN WISCONSIN
CALL DIGGERS HOTLINE
TOLL FREE
811 OR 1-800-242-8511
FAX-A-LOCATE 1-800-338-3860
TDD (FOR HEARING IMPAIRED) 1-800-542-2289
WIS. STATUTE 182.0175 (1974)
REQUIRES MIN. OF 3 WORK DAYS NOTICE BEFORE YOU EXCAVATE.



DISCLAIMER NOTE:
UTILITY LOCATIONS SHOWN ARE APPROXIMATE ONLY. IT SHALL BE THE CONTRACTOR'S RESPONSIBILITY TO DETERMINE THE EXACT HORIZONTAL AND VERTICAL LOCATION OF ALL EXISTING UNDERGROUND AND OVERHEAD UTILITIES PRIOR TO COMMENCING WORK.



PLOT SCALE: _____

REV. DATE: _____

ORIGINATOR: CITY OF MADISON, STREETS DIVISION